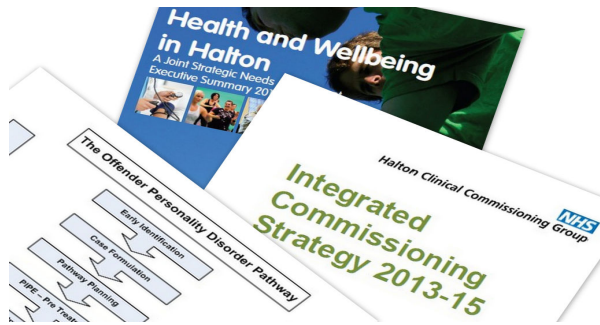


# Health Needs Assessment of Offenders in Halton

## Evidence to inform commissioning intentions



### Overview

A ‘rapid appraisal’ of the health needs of offenders in the community was commissioned by Halton Clinical Commissioning Group (CCG), to inform local commissioning intentions for 2014/15.

8 local recommendations for action cover:

- developing knowledge and data on ‘what works’ for drug and alcohol recovery.
- lessons learnt from the Offender Personality Disorder (OPD) programme activities.
- achievable actions regarding offenders with learning disabilities.
- referral pathways linking local custody suite service users to ‘gateway’ services.

#### Client

NHS Halton Clinical Commissioning Group (CCG)

#### Outputs

- Full & Summary reports
- Research templates
- Presentations to management teams in Council and CCG

#### Location

Halton; UK

*“Michael works in a very professional way and delivered quality reports within tight deadlines for us”. Commissioning Manager, Halton CCG*

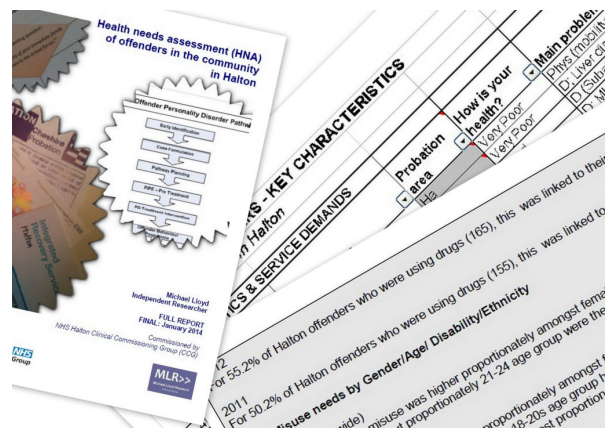
*“Carry on in the same manner, very effective”. Director of Integrated Commissioning, Halton CCG/LA*

### Aim & objectives

The aim of the work is to inform local commissioning intentions and raise the profile of offender health impacts - to augment the evidence collected in 2013 for other Cheshire areas.

Through meshing together existing evidence with findings from fieldwork, the study sought to:

- Summarise existing evidence on offender health needs;
- Integrate findings from fieldwork undertaken with offenders in the community and strategic stakeholders, to present an holistic overview of perceived need;
- Describe key characteristics of need for the offender population relevant to commissioning health services;
- Recommend actions for improvement.



### Added value & outcomes

- Presentation of findings to Council and CCG senior management teams, to inform commissioning intentions.
- Recommendations designed to be easily transferred into an action plan, for Halton partners to drive forward in 2014/15.
- Research materials and templates supplied to enable ‘in-house’ repetition of the work.

### More information

Contact **Michael Lloyd**,  
Principal Researcher and owner, MLR>>

- Email: [michael@researchMLR.co.uk](mailto:michael@researchMLR.co.uk)
- Web: [www.researchMLR.co.uk](http://www.researchMLR.co.uk)
- LinkedIn: <http://www.linkedin.com/pub/michael-lloyd/43/852/681>

**MLR>>**

Michael Lloyd Research  
& Associates