

2023 EVALUATION OF HERITAGE FUND PROJECT LSTM 'Past, Present & Future' Liverpool School of Tropical Medicine (LSTM)



Overview >>

LSTM secured a National Lottery Heritage Fund (NLHF) grant to celebrate its 125th Anniversary - creating an extensive programme of activity that offers an opportunity to reflect upon, and engage, audiences with LSTM's rich heritage and work.

MLR are evaluating the funded activities and events to December 2023, assessing the learning programmes, 'pop up' museum and associated activity labs, and the volunteer programme.

What we did >>

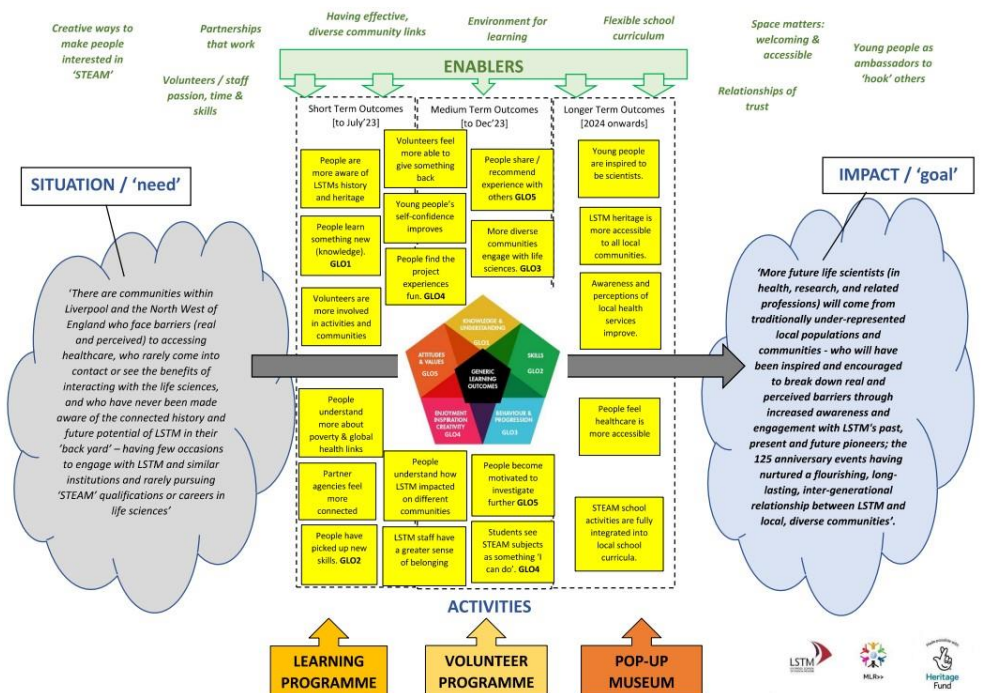
The evaluation to date has developed qualitative and quantitative templates, including online surveys and interview proforma's, to help build a timeline of evidence. An Evaluation Framework and 'Theory of Change' has been shared, and an interim 'half-way' report presented back to NLHF. A bespoke project microsite has been created (see screen-grab above) and is being updated with fieldwork materials and reporting, with a gallery of images creating a dynamic diary of evaluation activity.

Findings & outcomes >>

Our Evaluation Framework has been shaped by the [NLHF six principles for good evaluation](#):

- **Develop a logical framework** – with an overview Theory of Change drafted and shared: see graphic that follows.
- **Apply appropriate and methodical ways to gather robust evidence** – with user friendly questionnaires developed for young people and different audiences.
- **Analyse the data collected to provide evidence on outcomes** – with outcome-focused questions included in all feedback forms, linked to the Theory of Change.
- **Make the evaluation objective and as free from bias as possible** – MLR providing independent, formative and remedial feedback throughout 2023.
- **Present results in a well structured format** – with the Dec'2023 reporting being co-designed with the LSTM project team.
- **Provide clear conclusions and recommendations to identify and apply lessons learned** – one for Dec'2023!

Image source: MLR Theory of Change for LSTM NLHF project



More information >>

Contact **Michael Lloyd**,
Principal Researcher / owner.
michael@researchMLR.co.uk
www.researchMLR.co.uk



MLR>>

